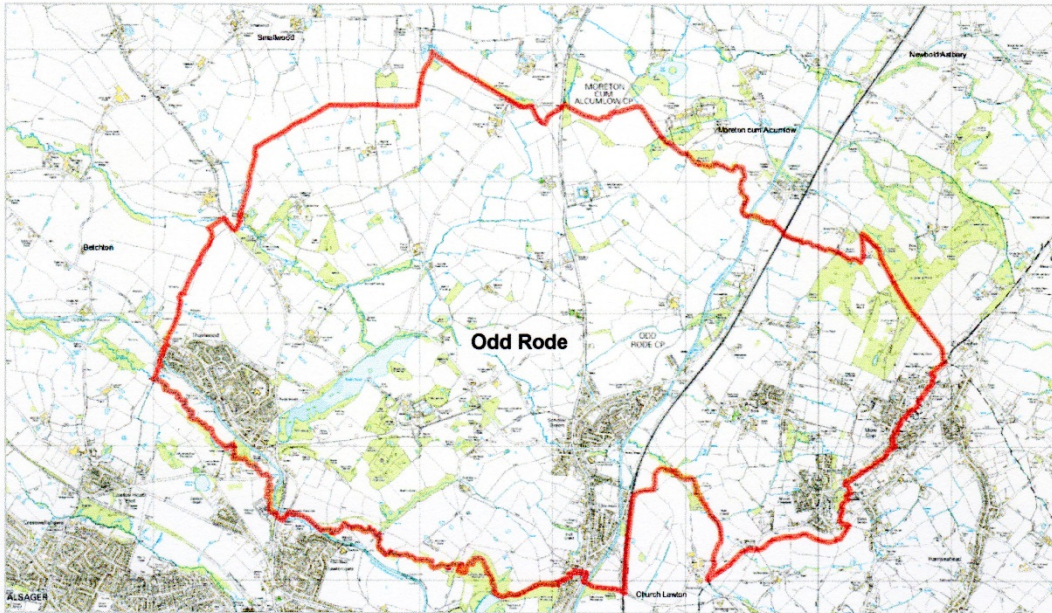


Odd Rode Parish Council Neighbourhood Development Plan



Household Questionnaire

This is your chance to influence Planning Policy
in the next five years

Household Questionnaire 2017

WE NEED YOUR

VIEW!

Draft Report and Analysis

If you don't give us your opinions, develop
be forced on you against your wis

About Your Household

Rode Heath ward

ODD RODE



PARISH COUNCIL

Small text below the council name, likely contact information or a motto.

Summary

The response to the residents' survey confirms what is also apparent from the 2011 Census that within Odd Rode Parish there are proportionately more people aged 46 and over than within the local authority of which Odd Rode is a part.

The average household size (no of persons per household) is smaller within the parish than within the local authority and is particularly small within the Scholar Green area.

It is also apparent that the response to the survey is greater within the older age groups than within the younger age groups.

The average length of residence of respondents' to the survey is just over 25 years with the longest being in Scholar Green and the shortest in Rode Heath.

Question 1.3 and 1.4 asked what residents liked and disliked respectively about **a) the physical environment and b)** – what we may call - **the civic environment**. In the first category we include:

- Countryside
- Nearness of the canal
- Peace & quiet
- Housing development
- Loss of trees & hedgerows
- Traffic increase
- Increase in noise

In the second category we include:

- Sense of community
- Loss of facilities
- Crime & ASB

There is no doubt that the respondents across all parts of the Parish appreciate the nearness of the countryside and the canal network and the ease by which it is possible to withdraw to the peace and tranquillity which is found here.

With this goes a concern that future housing development, especially on a large scale, and mass producing farming methods of the future will destroy this countryside and the plant life and wildlife habitats, such as hedgerows, it contains. The fear is manifested in a fear that traffic and noise levels will increase and a concern that this may affect the safety and health of future residents.

Respondents seem to deplore the loss of facilities especially shops and a deteriorating public transport service. These are parts of a well-functioning community and as they decline so does the sense of community.

It is noted that the sense of community is felt most strongly in Rode Heath, and it is also in this part of the parish that more respondents than elsewhere express a fear of losing facilities.

1.0 About Your Household

1.1 Age and household size

The first question in the survey was concerned with the age and number of people in each household and went as follows:

Q 1.1 How many people in your household are in the following age groups?

0-5 yrs	<input style="width: 30px; height: 20px;" type="text"/>	6-10 yrs	<input style="width: 30px; height: 20px;" type="text"/>	11-17 yrs	<input style="width: 30px; height: 20px;" type="text"/>	18-25 yrs	<input style="width: 30px; height: 20px;" type="text"/>
26-35 yrs	<input style="width: 30px; height: 20px;" type="text"/>	36-45 yrs	<input style="width: 30px; height: 20px;" type="text"/>	46-55 yrs	<input style="width: 30px; height: 20px;" type="text"/>	56-65 yrs	<input style="width: 30px; height: 20px;" type="text"/>
66-79yrs	<input style="width: 30px; height: 20px;" type="text"/>	80 + yrs	<input style="width: 30px; height: 20px;" type="text"/>				

Please put number(s) in the appropriate boxes

A summary of the response is shown in table 1 and as expected there has been a proportionately bigger response from people in the age groups 36 and above than from younger residents. A similar experience is had from other similar surveys in other areas, but it is also known from the past Census in 2011 that Odd Rode has a higher proportion of people in these age groups than wider areas. A particularly large group is the people aged 66-79 in Scholar Green which amounts to over 30% of the people in responding households from this area.

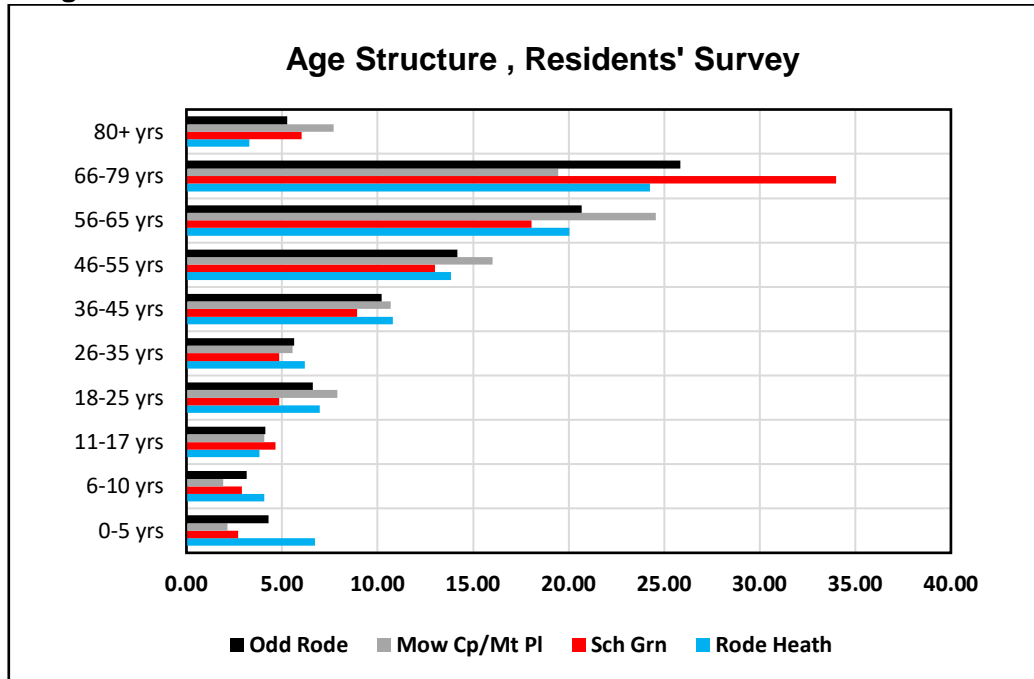
Table 1: Age Structure, Residents' Survey

Area\Age		0-5	6-10	11-17	18-25	26-35	36-45	46-55	56-65	66-79	80+	Total
Rode Heath	No	51	31	29	53	47	82	105	152	184	25	759
	%	6.72	4.08	3.82	6.98	6.19	10.80	13.83	20.03	24.24	3.29	100
Scholar Green	No	14	15	24	25	25	46	67	93	175	31	515
	%	2.72	2.91	4.66	4.85	4.85	8.93	13.01	18.06	33.98	6.02	100
Mow Cop/Mt Pleasant	No	10	9	19	37	26	50	75	115	91	36	468
	%	2.14	1.92	4.06	7.91	5.56	10.68	16.03	24.57	19.44	7.69	100
Odd Rode Survey	No	75	55	72	115	98	178	247	360	450	92	1742
	%	4.31	3.16	4.13	6.60	5.63	10.22	14.18	20.67	25.83	5.28	100

Other facts that stand out from this table is that the Mow Cop/Mt Pleasant area has the highest proportion of people aged 80 and above (7.69%) among the responding households and that corresponds to having the smallest group of young people aged 17 and younger (8.12%). Conversely Rode Heath has the smallest group of people aged 80 and over among the responding households (3.29%) while having the largest group of young people (14.62%).

A graphical comparison is shown below in diagram 1.

Diagram 1



We are now making a comparison between the age structure which has emerged from the survey and that which emerged from the 2011 Census. In doing so we are assuming that at least within the relatively small area of Odd Rode there has not being any significant change in the intervening six years.

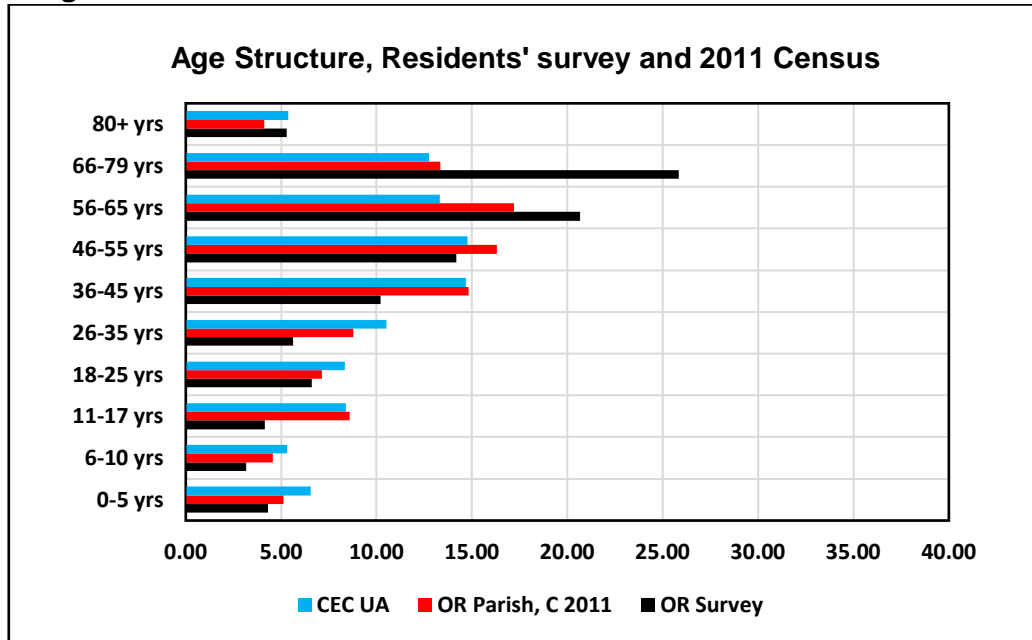
Table 2: Age Structure, Residents' Survey & 2011 Census.

Area\Age		0-5	6-10	11-17	18-25	26-35	36-45	46-55	56-65	66-79	80+	Total
Odd Rode Survey	No	75	55	72	115	98	178	247	360	450	169	1,819
	%	4.12	3.02	3.96	6.32	5.39	9.79	13.58	19.79	24.74	9.29	100
Odd Rode Parish	No	279	249	467	389	478	807	887	936	726	224	5,442
	%	5.13	4.58	8.58	7.15	8.78	14.83	16.30	17.20	13.34	4.12	100
Cheshire East UA	No	24,265	19,679	31,058	30,870	38,909	54,312	54,621	49,315	47,162	19,936	370,127
	%	6.56	5.32	8.39	8.34	10.51	14.67	14.76	13.32	12.74	5.39	100

What emerges from table 2 is firstly that Odd Rode Parish in 2011 had proportionately more people in the age groups 46-80 years of age and over than the local authority of which Odd Rode is a part. Secondly we can also deduct from this table that older age groups are much better represented in the survey than younger age groups. Unless there has been a significant shift in the population, people aged 66 and over who have responded may include as many as 65% of the actual population. The equivalent figure for the age group 18-35 may be only 25%.

A graphical representation of table 2 is shown below.

Diagram 2



From the information analysed above we can also derive some important information about the size of households and the findings are set out in table 3, page 4 overleaf.

It is noted that the household size (no of persons per household) at the time of the census was lower within Odd Rode than within the local authority, Cheshire East UA, as a whole, 2.29 persons per household compared to 2.32. It is also noted that among the survey respondents the household size was smaller still at only 2.14 person per household.

The number of 1 person households, as a proportion of all households in an area, is an important indicator of social wellbeing. It is considered that wellbeing and no of 1 person households in an area is inversely related; so it is considered that a high proportion of such households means less wellbeing.

It was slightly lower within Odd Rode than within the local authority at the time of the census and found to be lower still among the respondents to the survey. However, within Odd Rode the respondents to the survey indicate that the proportion of 1 person households is highest within Scholar Green which might be related to the high number of elderly people found in this area as shown in table 1. The proportion is lowest within the Mow Cop/Mt Pleasant area.

No respondent indicate more than 6 persons in any one household eg 2 parents with 4 children. In the last column of table 3 the number of such households is added to the number of 5 person households. It is then found that the largest number of 5-6 person households is found in Rode Heath no doubt related to the higher proportion of young people found in that area as also shown in table 1.

Table 3: Household Size.

		Hhlds	Not stated	Net Hhlds	Persons	Average size	1 pers hhlds	5-6 pers hhlds
Rode Heath	No	343	8	335	759	2.27	76	13
	%	-	-	100	-	-	22.69	3.88
Scholar Green	No	259	2	257	515	2.00	62	3
	%	-	-	100	-	-	24.12	1.17
Mt Pl/Mow Cop	No	223	2	221	468	2.12	48	3
	%	-	-	100	-	-	21.72	1.36
Odd Rode Survey	No	825	12	813	1742	2.14	186	19
	%	-	-	100	-	-	22.88	2.34
Odd Rode C2011	No	2374	N/A	2374	5442	2.29	617	N/A
	%	-	-	100	-	-	25.99	-
Cheshire East UA	No	159.4	N/A	159.4	370.1	2.32	47.3	N/A
	%	-	-	100	-	-	29.67	-

The second question on household characteristics was about length of residency in years:

Q 1.2 How long has your household lived in Odd Rode?

Length of residency in years

Please use the person with the longest residency in Odd Rode

Table 4: Length of Residence.

		Not stated	Total	Net = & < 5yrs = & >40 yrs		Max	Average	
		<----- No of households----->				<--- Years --->		
Rode Heath	No	13	343	330	57	83	86	24.88
	%	-	-	100	17.27	25.15	-	-
Scholar Green	No	9	259	250	51	73	91	26.36
	%	-	-	100	20.40	29.20	-	-
Mt Pl/Mow Cop	No	10	223	213	46	64	87	25.81
	%	-	-	100	21.60	30.05	-	-
Odd Rode Survey	No	32	825	793	154	220	91	25.59
	%	-	-	100	19.42	27.74	-	-

No easy conclusion springs to mind from the response to this question. Rode Heath has the lowest average length of residency at just under 25 years and to that extent may be regarded as the 'youngest' area. Mow Cop-Mt Pleasant area has the highest percentage of people with a length of residency of 40 years or more at just over 30%, but also the highest percentage of people with a residency of 5 years or less, 21.6%, which may lead to the conclusion that that area is having a bit of a revival.

1.2 Likes and Dislikes

The next two questions of the questionnaire proved to be somewhat controversial.

Early on after a majority of the questionnaires had been distributed some potential respondents drew to our attention that our scoring instructions went against the convention

Q 1.3 What does your household like about living in this area?

Countryside	1	2	3	4	5	6	7	8	9	10	<i>Please circle each feature with a score from 1 to 10: 1 = like most 10 = like least You can use the same number more than once</i>
Nearby canal	1	2	3	4	5	6	7	8	9	10	
Peace and quiet, including lack of light pollution	1	2	3	4	5	6	7	8	9	10	
Sense of community	1	2	3	4	5	6	7	8	9	10	
Local facilities	1	2	3	4	5	6	7	8	9	10	
Other (please specify)	1	2	3	4	5	6	7	8	9	10	

Q 1.4 What does your household consider to be the main concerns about this area?

Housing development	1	2	3	4	5	6	7	<i>Please rank order how important to your household from 1 to 7 each of these features: 1 = most important 10 = least important Circle each number only once</i>
Increases in traffic	1	2	3	4	5	6	7	
Loss of trees and hedges	1	2	3	4	5	6	7	
Increase in noise or light pollution	1	2	3	4	5	6	7	
Loss of local facilities	1	2	3	4	5	6	7	
Crime and antisocial behaviour	1	2	3	4	5	6	7	
Other (please specify)	1	2	3	4	5	6	7	

in that the respondents were instructed to give the 'like **least**' and '**least** important' the highest score whereas convention will have it that such descriptions should have the lowest score.

It appears that the instructions have confused many respondents and we now find that most have used the **intended** method of giving 'like **most**' and '**most** important' the lowest score and 'like **least**' and '**least** important' the highest score. However a significant minority have followed convention and done the **reverse** and given '**most**' a high score. How do we know or why do we suspect that that is so?

Responses with a large number of '10's circled in answer to question 1.3 were compared with replies to questions in section 3 and section 6. It then became incomprehensible and nonsensical that a person who liked the local countryside **least** would favour such measures as restricting development in the Green Belt (question 3.1), restricting the size of development (question 3.3) or would value wildlife and support protection of trees and hedgerows (section 6).

The question then arises as to how to deal with the two sets of responses in an equitable manner. The methodology, that has been followed, has been described in details in a separate report. Suffice it to say at this stage that this methodology involved a verbal reclassification based on detailed analysis of the scoring in each response. It was felt that this way of dealing with the issue would be preferable to having to redesign the database and possibly having to make a subjective judgment of each response.

Likes

The new classification is as follows:

Scoring	Very much	Likes	A little	Not much	Not at all
Intended	1-2	3-4	5-6	7-8	9-10
Reverse	9-10	7-8	5-6	3-4	1-2

Having achieved the reclassification for the parish as a whole and for each sub-area we arrive at an analysis as follows:

Table 5: What does your household like about Odd Rode?

<u>n=825</u>	Not scored	Very much	Likes	A little	Not much	Not at all
	<-----	Percentage				----->
Countryside	1.45	89.09	4.61	1.45	0.85	2.55
Nearby canal	6.06	62.79	16.36	8.97	2.67	3.15
Peace & quiet	4.24	73.82	11.27	4.85	2.30	3.52
Community	6.42	43.39	25.70	15.76	5.70	3.03
Facilities	9.33	25.09	21.33	20.24	12.97	11.03

What a large majority of the residents like is the countryside (89%), the presence of 'Peace quiet and lack of light pollution (74%) and to a lesser extent the nearby canal network (63%). However a small minority (<4%) do not seem to appreciate these amenities at all.

A majority (43%+ 26%) likes the sense of community.

Nearly 10% of respondents have not scored 'Local facilities' which may mean that they are not worth considering and 24% (13%+11%) do not seem to appreciate them at all.

Table 6: What does your household like about Odd Rode? (Rode Heath)

<u>n=343</u>	Not scored	Very much	Likes	A little	Not much	Not at all
	Percentage					
	<----->					
Countryside	1.46	87.17	5.25	2.04	1.46	2.62
Nearby canal	2.92	70.26	15.45	5.83	3.50	2.04
Peace & quiet	2.62	72.59	12.83	5.83	2.62	3.50
Community	3.79	51.02	29.45	11.08	2.04	2.62
Facilities	6.12	29.74	26.53	21.28	10.50	5.83

The response from Rode Heath broadly reflects that of the Parish as a whole. However, it is worth noting that there seem to be a better sense of community and better appreciation of the facilities available.

The response from Scholar Green is also similar to the response from the whole Parish as well as Rode Heath and the Mt Pleasant - Mow Cop area (see table 8, below), but there are some notable differences.

Firstly the canal seem to be having a less prominent role in the popular assessment of the area, hidden as it is either in a deep ravine or on a high embankment as it traverses this area. Secondly the sense of community is less prominent compared to the Parish as a whole or Rode Heath which again may be related to a high number of elderly 1 person households. Thirdly the assessment of facilities is even more negative than for these other areas, although not as negative as for the Mt Pleasant - Mow Cop area (see table 8, below).

Table 7: What does your household like about Odd Rode? (Scholar Green)

<u>n=259</u>	Not scored	Very much	Likes	A little	Not much	Not at all
	Percentage					
	<----->					
Countryside	1.54	91.89	3.86	1.54	0.00	1.16
Nearby canal	5.41	68.34	15.83	8.49	0.39	1.54
Peace & quiet	6.56	72.20	11.20	5.41	2.32	2.32
Community	7.72	39.00	19.69	20.85	10.04	2.70
Facilities	9.65	27.80	22.01	14.29	11.58	14.67

The final analysis for the Mt Pleasant - Mow Cop area is shown in table 8, and as before it follows broadly the same structure, but there are some notable differences between this area and the rest of the parish.

Table 8: What does your household like about Odd Rode? (Mt Pleasant-Mow Cop)

<u>n=223</u>	Not scored	Very much	Likes	A little	Not much	Not at all
	Percentage					
	<----->					
Countryside	1.35	88.79	4.48	0.45	0.90	4.04
Nearby canal	11.66	44.84	18.39	14.35	4.04	6.73
Peace & quiet	4.04	77.58	8.97	2.69	1.79	4.93
Community	8.97	36.77	26.91	17.04	6.28	4.04
Facilities	13.90	14.80	12.56	25.56	18.39	14.80

Firstly, the canals are appreciated even less than in the rest of the parish. They are situated ½ mile to one mile down the hill side and are not a significant part of the village landscape as they are especially in Rode Heath. Secondly, the sense of community is even less evident here than in the rest of the parish. Thirdly, whatever facilities, there are, are judged even more negatively (or less positively) than in the rest of the parish.

The way the respondents have dealt with the question of liking the local facilities may be influenced by a combination of the number and types of services/facilities available and their geographical distribution. Rode Heath is a relatively compact area with fairly short walking distances between the facilities – pubs, shops, take-away, school – compared to both Scholar Green and Mt Pleasant - Mow Cop.

Dislikes

An inspection of the responses to question 1.4 seems to indicate that a majority of responders have followed the same methodology in answering this question as they followed in answer to question 1.3. However, admittedly the issues are here more complicated in that the people were asked to submit a ranking, but this seems to be ignored for most if not all the response received. Added to this complication is the fact that the guidance suggested a scoring from 1 to 10, but the question only allow for a ranking of 1 to 7.

In any case the methodology in analysing question 1.4 is the same as were followed above in analysing question 1.3.

The classification that has been followed here is:

Scoring	Most important	Important	Sort of Important	Not important	No concern
Intended	1	2	3-4	5-6	7
Reverse	7	5-6	3-4	2	1

With this classification the final outcome of the analysis of all results for the Parish as a whole is set out in table 9, page 20 overleaf.

It appears that the dominant concern is with ‘Housing Development’ and the ‘Traffic Increase’ that will result from this as well as the general increase in traffic of all kindswith over 50% of respondents indicate those as most important concerns.

Other aspects seems to be of less concern and ‘Crime and Antisocial behaviour’ seems to generate the least concern with 19% believe it to be ‘Not important’.

Table 9: The main concerns about Odd Rode Parish

<u>n=825</u>	Not scored	Most important	Important	Sort of Important	Not important	No concern
	Percentage					
Hsg Development	5.94	52.73	12.61	15.03	6.79	6.91
Traffic Increase	4.24	55.03	17.45	13.21	4.97	5.09
Loss of trees etc.	10.55	36.48	17.21	22.67	9.09	4.00
Increase in noise etc.	9.82	36.36	17.33	24.85	8.00	3.64
Loss of facilities	8.61	37.70	14.06	20.61	13.82	5.21
Crime & ASB	10.42	28.97	12.36	23.88	18.79	5.58

The response from Rode Heath indicate that fewer households here are concerned with 'Housing Development' and 'Traffic Increase' than in the wider Parish, 49% compared to 53% and 53% compared to 55% in the wider area.

By contrast more people are concerned about 'Loss of facilities' (41%) than in other parts of the parish and the parish as a whole (38%). This aspect may be foremost in peoples' minds due to the pending closure of a doctors' surgery in this area.

For some - at least to the writer of this report! – unknown reason people in Rode Heath also indicate more concern relating to 'Crime and Anti-Social Behaviour' (31%) than people in the Parish as a whole (29%).

Table 10: The main concerns about Odd Rode Parish (Rode Heath)

<u>n=343</u>	Not scored	Most important	Important	Sort of Important	Not important	No concern
	Percentage					
Hsg Development	4.66	48.69	15.74	17.20	7.87	5.83
Traffic Increase	3.21	53.06	18.66	16.03	4.96	4.08
Loss of trees etc.	10.50	32.07	20.12	24.49	9.91	2.92
Increase in noise etc.	8.45	31.78	19.24	27.99	9.04	3.50
Loss of facilities	7.29	41.11	16.03	19.24	13.12	3.21
Crime & ASB	9.33	30.90	16.03	22.74	16.62	4.37

The analysis of the concerns indicated by the respondents from Scholar Green, see table 11, page 12, overleaf) show that area to be the most concerned with 'Housing Development' (56% compared to 53%) which may be understandable in view of the continuing interest in development off Portland Drive and elsewhere. That this is the area where people show most concern relating to 'Loss of trees' (40% compared to 36%) may be a corollary to the concern for the continued growth in housing. Concern for 'Traffic Increase' is only slightly greater than within the wider area.

Table 11: The main concerns about Odd Rode Parish (Scholar Green)

<u>n=259</u>	Not scored	Most important	Important	Sort of Important	Not important	No concern
	Percentage					
Hsg Development	5.41	56.37	10.04	12.74	6.56	8.88
Traffic Increase	3.86	55.21	18.15	11.97	4.63	6.18
Loss of trees etc.	10.42	40.15	16.99	19.31	7.72	5.41
Increase in noise etc.	9.65	39.77	16.99	22.78	7.34	3.47
Loss of facilities	10.04	36.68	10.42	22.78	13.51	6.56
Crime & ASB	10.42	27.03	8.11	26.64	21.62	6.18

Another noteworthy difference between Scholar Green and the rest of the parish appears to be the limited concern regarding 'Crime and Anti-Social Behaviour'. 28% of the respondents, the highest of the three areas, find it 'Not important' or of 'No concern' compared to 24% for the parish as a whole.

The main differences between the Mt Pleasant – Mow Cop area and the rest of Odd Rode parish appear to be that the respondents who find concern about 'Traffic Increase' more important than elsewhere, nearly 58% compared to 55% for the parish as a whole. The 'Loss of facilities' appear to be of less concern here than elsewhere with 34% finding it 'Most important' compared to 38% for the parish as a whole.

Table 12: The main concerns about Odd Rode Parish (Mt Pleasant-Mow Cop)

<u>n=223</u>	Not scored	Most important	Important	Sort of Important	Not important	No concern
	Percentage					
Hsg Development	8.52	54.71	10.76	14.35	5.38	6.28
Traffic Increase	6.28	57.85	14.80	10.31	5.38	5.38
Loss of trees etc.	10.76	39.01	13.00	23.77	9.42	4.04
Increase in noise etc.	12.11	39.46	14.80	22.42	7.17	4.04
Loss of facilities	8.97	33.63	15.25	20.18	15.25	6.73
Crime & ASB	12.11	28.25	11.66	22.42	18.83	6.73